

PowerCable QIG



QIG (Quick Installation Guide)



NETIO PowerCable

Quick Installation Guide (QIG)

Thank you for purchasing a product of NETIO products a.s. Before using your product for the first time, please read this short guide to avoid problems with incorrect installation or use. For more information, please see the User's Manual available at <http://netio-products.com>.

Please read carefully the following notice.

The NETIO PowerCable is an electrical device. Mishandling may damage the device, void your warranty, or result in injury or death.

Safety Notices

- 1) The manufacturer is not liable for any damage caused by incorrect use of the device or by operating it in an unsuitable environment.
- 2) The device is not rated for outdoor use.
- 3) Do not expose the device to strong vibrations.
- 4) Unauthorized modifications may damage the device or cause a fire. Do not open the device – risk of electric shock!
- 5) Protect the device from liquids and excessive temperatures.
- 6) Make sure the device does not fall.
- 7) Only electrical appliances approved for use with the electrical network may be connected to the device.
- 8) Do not connect multiple devices in series.
- 9) The cable plug must be easily accessible.
- 10) The device is completely switched off only when unplugged.
- 11) If the device malfunctions, disconnect it from the electrical outlet and contact your vendor.
- 12) If the power cable is damaged, do not use the device. Send the device to an authorized service center for a repair.



Minimum system requirements (for configuration)

A device with an Internet browser (Firefox, Chrome, Safari, Microsoft Internet Explorer, Opera, Mozilla etc.) that has JavaScript and Cookies support enabled.

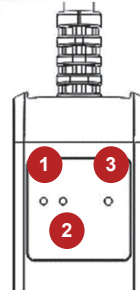
Package contents

- NETIO PowerCable device
- Quick Installation Guide (QIG)

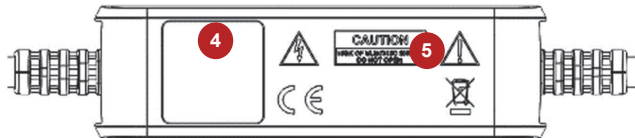
Device description

- 1) Status LED (Y+R)
- 2) Output state LED (G)
- 3) Button – to press, a thin object is needed (may be conductive)
- 4) Type plate – indicates the device model, electrical rating, maximum switching power and serial number
- 5) Caution: Do not open the device – risk of electric shock!

Front view



Rear view



Status LED (1)	Yellow	Off	No WiFi connection
		On	WiFi connected
		Quickly flashing & red is off	AP mode
		Slowly flashing & red is off	Waiting for DHCP
Output LED (2)	Green	3 fast flashes every second & red is off	Locate function – for one minute after being enabled in the web administration
		Flash	Activity (command received over M2M)
		Off	Output relay open
All LEDs	Yellow + red, green	On	Output relay closed
		Quickly flashing for 1sec	“Load to defaults & AP mode” activated
All LEDs	Yellow + red, green	On	Output relay closed
		Quickly flashing for 1sec	“Load to defaults & AP mode” activated
All LEDs	Yellow + red, green	On	Output relay closed
		Quickly flashing for 1sec	“Load to defaults & AP mode” activated



Button functions

Output control	To change the output state, press the button three times within 1 to 5 seconds.
AP mode activation	Press and hold the button for at least 10 seconds while the device is on. This activates the AP mode. You can now connect to the device and change the WiFi network to which it should connect. (Yellow LED blinks quickly)
Restoring factory defaults	Switch Off the device. Press and hold the button for at least 10 seconds while powering up the device. The device reverts to factory settings and the AP mode is activated. (Green quickly flashing for 1sec, than Yellow blinks quickly)

First connection, starting up and basic configuration

- 1) Connect the NETIO PowerCable plug into an electrical socket. When the device is powered up for the first time, it enters the “AP mode” (Yellow flashing quickly).
- 2) On a computer, tablet or smartphone, display available WiFi networks and connect to the unsecured “PowerCable-AP-xx” network. (Figure 1)
- 3) Open a web browser and enter **10.0.42.1** – you will see NETIO PowerCable WiFi configuration page. (Figure 2)
Alternatively, enter any URL, you will be redirected, for example www.netio.eu.

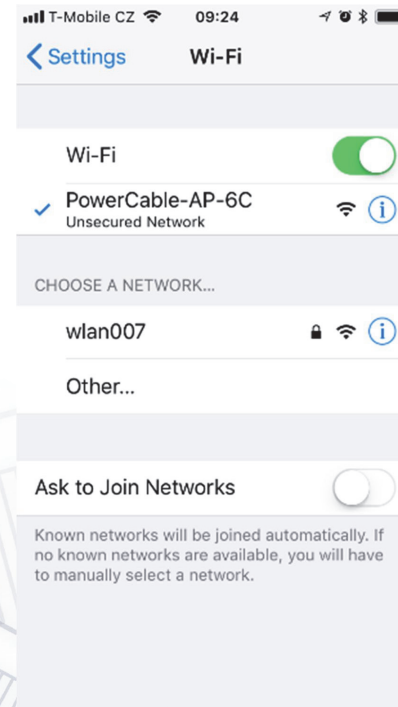
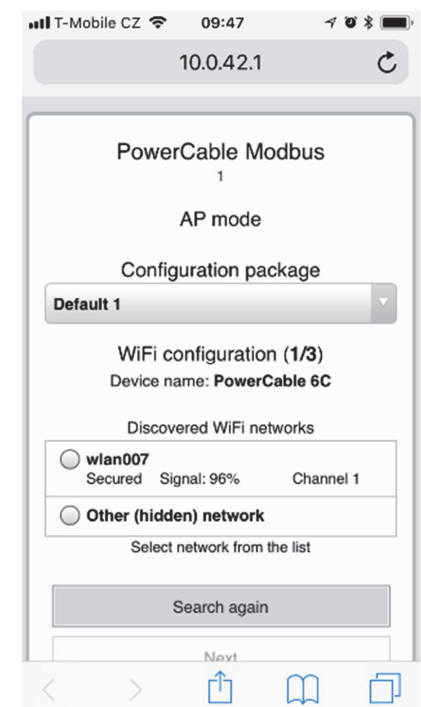


Figure 1



3 Figure 2



- 4) Select your network in the list of detected networks and press "Next". (Figure 3)
- 5) Enter the password for the selected WiFi network. You may also change the device name. If your network does not use the DHCP, unselect this option and manually enter the IP address and other network parameters (for experts only). Confirm by pressing "Next". (Figure 4)

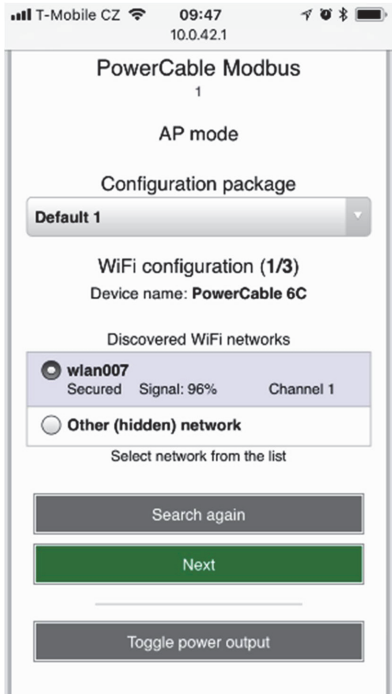


Figure 3

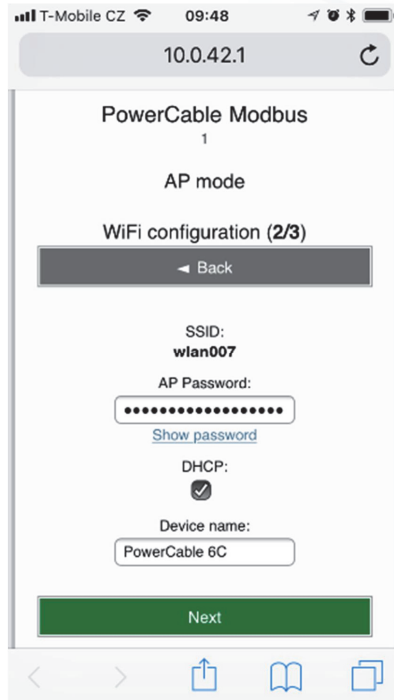


Figure 4



SN (serial number) on the label

-----xx
24A42C381234

WiFi network:

PowerCable-AP-xx

PowerCable-AP-34



- 6) A page with the connection result is displayed. If it shows "WiFi status: Connected", check the network parameters and then click "Save&Connect" to save the configuration. (Figure 5) The device then exits the AP mode, connects to the selected WiFi network, and displays a network configuration summary page. (Figure 6) WiFi connection is indicated with the yellow LED.

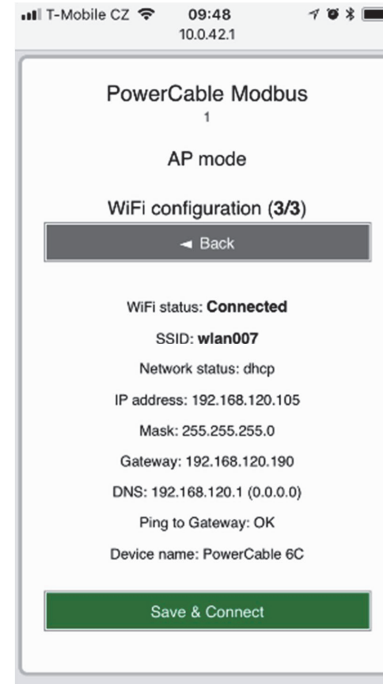


Figure 5

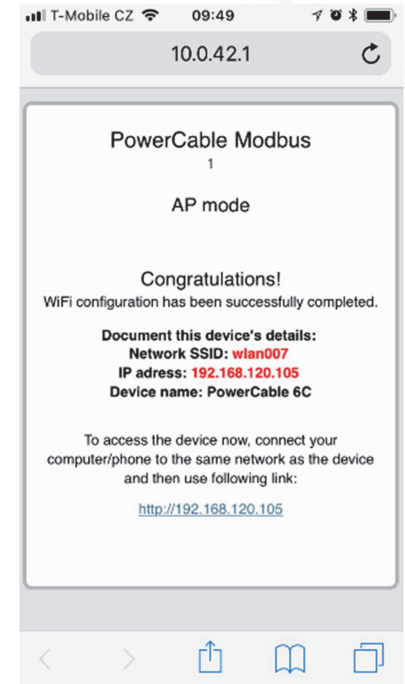


Figure 6

- 7) Connect your computer, tablet or smartphone to the same network where the NETIO PowerCable is now connected and enter the device's IP address (or use the link at the summary page, see the previous step). If you haven't noted the IP address, you can use the **NETIO Discover** to find it, as described below.
- 8) After entering the address in a browser, the web administration login dialog appears. The default username / password combination is **admin / admin**. After a successful login, the web administration of the device appears. We recommend changing the default username and password using the Users tab in the left-hand menu.
- 9) Device web administration allows you to control the socket (Outputs tab), set up M2M communication protocols (M2M API Protocols tab) and configure more parameters (Settings tab). (Figure 7) For details, see the user manual.

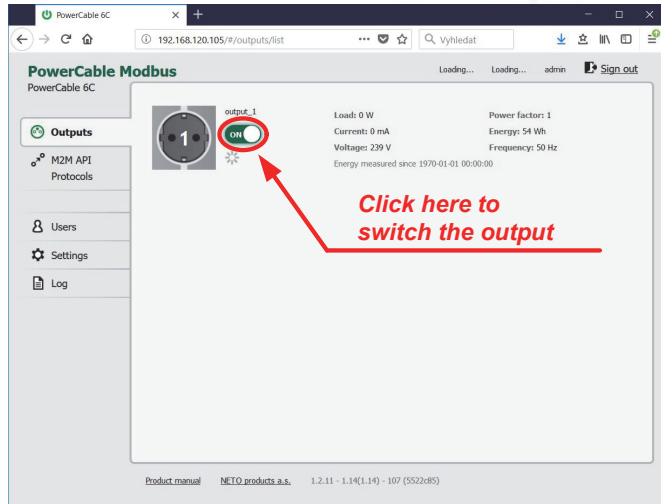


Figure 7

Installation = NETIO Discover

To find NETIO PowerCable device on the LAN, use the **NETIO Discover** utility.

- 1) MS Windows: Find the **NETIO Discover** utility at our website, install it.
- 2) Other operating systems (Mac, Linux, ...): Use **NETIO Discover multiplatform** version written in JAVA. An up-to-date JAVA version is required.
- 3) It will show you devices on the LAN. If your network uses a DHCP server, simply **click the IP address** in NETIO Discover and open the web interface. (Figure 8)

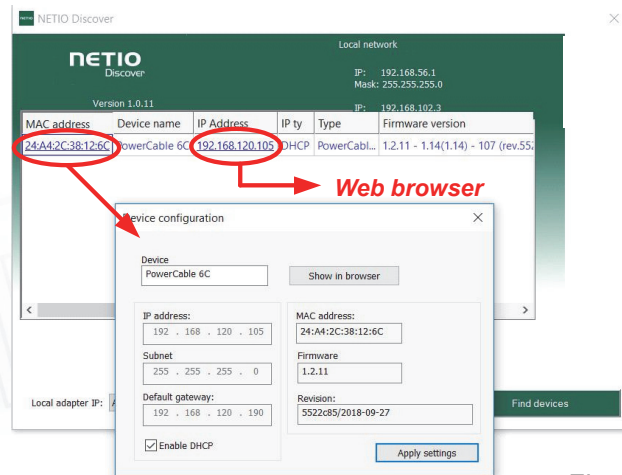


Figure 8



Specifications

Power	101E, 101F: 230V~; 50Hz; 16A 101J, 101S: 230V~; 50Hz; 10A
Switched output	101E, 101F: 230V~; 50Hz; 16[8]A; max. 3600W 101J, 101S: 230V~; 50Hz; 10[8]A; max. 2300W
Internal consumption	Max 1 W
Output relay	Micro-disconnection (μ) (resistive load) 1E5 switching cycles, max. 1.5kV pulse voltage Switch heat and fire resistance 1
Interfaces	1x Wi-Fi IEEE 802.11 b/g; 2.4GHz
Environment	IP30, protection rating = class 1 Operating temperature -10 .. 65°C (6A load = max. 63°C, 10A = max. 50°C, 16A = max. 30°C) Device rated for pollution degree 2. Designed for continuous operation in altitudes up to 2000m. No additional cooling required.
Caution	The device is not designed to power appliances with a high inrush current. Do not connect several devices in series. The device is safe only when completely disconnected from the electrical network. The cable plug serves as the disconnection means and must be easily accessible. The electrical socket must be protected with a circuit breaker rated at 16A or less and earthed.

The manufacturer assumes no responsibility for any technical or printing errors and reserves the right to modify the product or this document without prior notice. Such changes are announced at the manufacturer's website, <http://netio-products.com>.

The manufacturer disclaims all warranties of any kind with respect to the contents of this document, as well as all implied warranties of merchantability or fitness for a particular purpose. In particular, the manufacturer disclaims all responsibility for any damages caused by incorrect use of the product, failure to comply with instructions and recommendations in the user manual, and/or unprofessional actions of third parties not authorized by the manufacturer to perform warranty service.



DECLARATION OF CONFORMITY (RED CE)

Manufacturer: NETIO products a.s.

Address: U Pily 3/103
143 00 Praha 4, Czech Republic

Product / type: 101x - where "x" define a socket/plug variant:

E	FR	L	Italy
F	DE	G	UK
J	Swiss	H	Israel
S	IEC320 C13/C14	T	IEC320 C19/C20

This declaration of conformity is issued under the sole responsibility of the manufacturer. Object of the declaration: "Extension socket NETIO COBRA controlled and monitored over the WiFi / LAN network".

The object of the declaration described above is in conformity with the relevant Union harmonization legislation:

- NV 426/2016 Sb. including amendments
- **RED CE** (Radio Equipment Directive) - 2014/53/EU – including amendments
 - ETSI EN 300 328 V2.1.1, EN 62311:2008, ETSI EN 301 489-1 V2.2.0
 - EN60950-1:2006+A11:2009+A1:2010+A12:2011+A2:2013

References to the relevant harmonized standards used or references to the other technical specifications in relation to which conformity is declared:

- Article 3.1 a) Health and safety
- Article 3.1 b) Electromagnetic compatibility
- Article 3.2 Effective use of radio spectrum

Additional information:

- Test Report No.: EZÚ 700026-01/06 of 31.1.2018
- Test Report No.: EZÚ 700026-01/09 of 31.1.2018

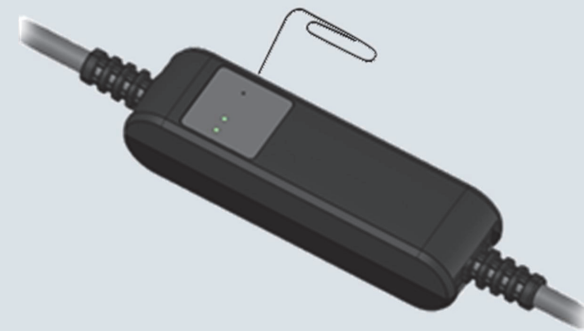
RoHS:

The product mentioned above to which this declaration relates is in conformity with the essential requirements and other relevant requirements of the Directive 2011/65/EU (restriction of the use of certain hazardous substances in electrical and electronic equipment).

The product mentioned above is in conformity with the following standards and/or other normative documents: **EN 50581: 2012**

Czech Republic, Prague, 11.6.2018

Jan Řehák, Chief of the board



First configuration

(1) AP mode activation	Switch ON the device. Press and hold the button for at least 10 seconds while the device is on. You can use paper clip or any metal sharp tool. This activates the AP mode . (Yellow LED blinks quickly)
(2) Connect to the device	In AP mode the PowerCable works as a WiFi Access Point and DHCP server. Connect to the " PowerCable-AP-xx " where xx are last two digits from serial number on the device label.
(3) Connect device do the WLAN	Open in your browser any IP address or " 10.0.42.1 ". Select your local WiFi network and configure wifi password.
(4) Note assigned IP address	On the last page it will show you in red color assigned final IP address.
(5) Device web configuration	Click to this address or open it in the computer. Default username: " admin ", password: " admin ".

Download software

NETIO Discover (for MS Windows or JAVA version)
<https://www.netio-products.com/en/download>

Factory defaults

Switch OFF the device. Press and hold the button for at least 10 seconds **while powering up the device**. The device reverts to factory settings and the AP mode is activated.
(Green quickly flashing for 1sec, than Yellow blinks quickly)

Modbus/TCP first steps

Search on the NETIO website the **AN27: Modbus/TCP with NETIO 4x – Control and measure LAN power sockets**